

## Lambda DNA

### Pst I Digest

Catalogue No 405-1, 100 µg  
405-2, 500 µg

Concentration 0.5µg/µl

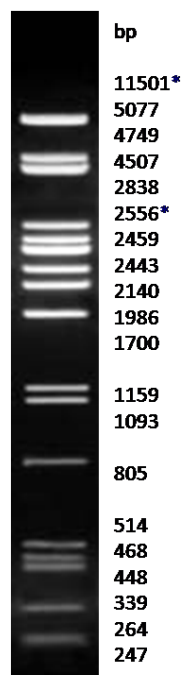
**Description:** The *Pst* I digest of λ DNA yields the following discrete fragments (in base pairs): 11501\*, 5077, 4749, 4507, 2838, 2556\*, 2459, 2443, 2140, 1986, 1700, 1159, 1093, 805, 514, 468, 448, 339, 264, 247, 216, 211, 200, 164, 150, 94, 87, 72, 15.

**Preparation:** Lambda DNA was completely digested by *Pst* I, phenol extracted, ethanol precipitated, dissolved in 10 mM Tris-HCl (pH 8.0) and 1 mM EDTA.

**Storage buffer:** 10 mM Tris-HCl (pH 8.0) and 1 mM EDTA. Store at -20°C.

**Note:** Dilute in TE or other buffer of minimal ionic strength. DNA may denature if diluted in dH<sub>2</sub>O and subsequently heated.

\*The cohesive ends (12b *cos* site of bacteriophage λ) of fragments 11501bp and 2556bp may anneal to and form the additional band. These fragments may be separated by heating to 65°C for 5 min and then cooling on ice for 3min.



1.5% agarose